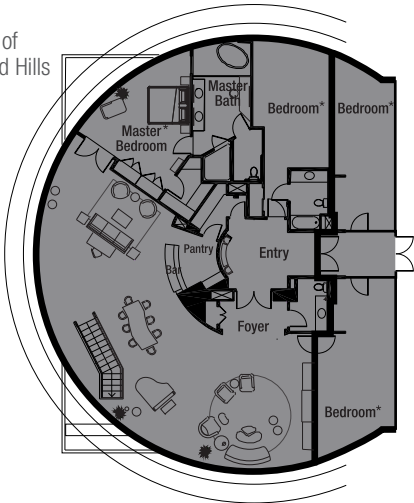


# SUITES

## PANORAMA SUITE

View of Hollywood Sign

View of Hollywood Hills



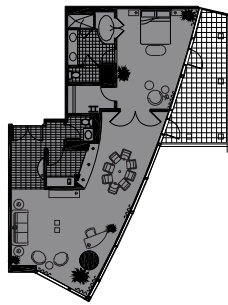
▶ Total Area:  
3,594 -sq.-ft.  
(Includes 4 Bedrooms\*)

\*Connecting bedroom  
for additional cost

The Panorama Suite's unique, mid-century modern furnishings evoke the chic motifs of movie stars' Hollywood Hills homes, and include high, vaulted ceilings, motorized drapes, cork floors, a baby grand piano, a wet bar, an elegant dining table with seating for ten, a powder room, and a steam shower and oversized Jacuzzi® in the master bath. Plus, the suite can be configured from one to four bedrooms, and guests will enjoy modern amenities such as state-of-the-art communications facilities, flat-screen televisions and, of course, world-class Renaissance service.

View of Downtown L.A.

## HOLLYWOODLAND SUITE

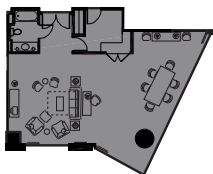


▶ Total Area:  
1,300 -sq.-ft.

\*Connecting  
bedroom for  
additional cost

This spectacular rooftop suite boasts a stylish décor and opulent amenities, including a wet bar, a powder room, an oversized tub and a walk-in shower. The magnificent terrace provides sweeping views of the Hollywood Sign and downtown LA's sparkling skyline.

## THE SKYLINE & THE CRESTVIEW

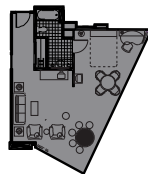


▶ Total Area:  
1,200 -sq.-ft.

\*Connecting  
bedroom for  
additional cost

The sophisticated layout, featuring two large seating areas and a wet bar, is rivaled only by the dazzling views of Hollywood and Los Angeles.

## STUDIO SUITE



Total Area: 700 -sq.-ft.

• Quantity: 12

\*Connecting bedroom for additional cost

## ONE-BEDROOM SUITE

Total Area: 658 -sq.-ft.

• Quantity: 16

## EXECUTIVE BEDROOM

Total Area: 622 -sq.-ft.

• Quantity: 81